

DEPARTMENT OF SCHOOL ADMINISTRATION

PCI
FORM 4 – 1
Due annually October 31st



Plan for Continuous Improvement

SCHOOL: **Princess Anne Elementary School**

DATE: **10-31-2007**

SCHOOL MISSION STATEMENT: To raise all student achievement

- SACS
- SOA
- HSTW

- TITLE I
- OTHER GRANT
- Other _____

Virginia SOA Requirements

1. Student Achievement
2. Student / staff Attendance
3. Drop-out Rate
4. Staff Development

Virginia Beach City Public Schools values Youth, Commitment, Compassion, Integrity, Positivity, Respect, Wisdom, and Work Ethic.

VBCPS Goals for 2001 – 2007
Framework for the Future of Schools



Expanded Instructional Opportunities Through Data-Driven Curriculum



Effective, Efficient Use of Resources to Create Quality Educational Opportunities



Quality Work Force: Trained and Accountable for Performance



Recognition of Our Diversity – Respect for All People



Safe Schools and Effective, Well-Disciplined Environment



Technology Integrated Into Our Curriculum and Instruction



Meaningful Involvement of Community, Parents, and Partners

PLAN

Demographic Overview (Attach School Report Card and School Profile Sheet)

Princess Anne Elementary is celebrating 51 years of academic excellence. It was built in 1956, as a small rural school named Seaboard Elementary, has grown and changed into a school that prides itself on academic achievement. Our neighborhoods include High Gate Greens, South Gate, Rollingwood, Princess Anne Woods, Litchfield, Seaboard Forest, Foxfire, Heron Ridge, Princess Anne Quarter, High Court, Seaboard Acres, and Courthouse Forest. Our enrollment is approximately 550.

Our school has proudly reached accreditation for the past 6 years. Some highlights are:

- All scores in all areas are above 85%
- The average scale score is over 470 in all areas
- Over 62% of our 4th graders scored academic advanced in Reading
- 98% of fifth graders passed writing
- Almost 70% of 3rd graders scored academic advanced in History
- Average daily attendance of 97.89%

Here at Princess Anne we have had 100% PTA membership for the past 5 years. Our volunteer hours continue to rise. Parents play an active role in the success of Princess Anne. Our scholarship committee raised in excess of \$8200 last year. They funded the majority of equipment for our science lab which afforded us the opportunity to provide children with experience in scientific investigation. Our PTA also helps to offset the costs of valuable field trips, i.e. to Petersburg, Williamsburg, and Jamestown. As well as on site field trips from Experiential Learning, Contemporary Arts Center, Virginia Aquarium and Jamestown Outreach.

PLAN

One of our strengths is our Partners in Education program. Our partnership with NIMTC (Naval and Marine Intelligence Training Center) is in its 17th year of existence. They are an integral part of the school. In the 2006-2007 school year this partnership was recognized by the school division by receiving the "Outstanding Partnership" award. They provide support for our evening events such as math and science night, literacy night, book fairs, and Santa's breakfast. They support our efforts for Jump Rope for Heart and Field Day. They also promote our PE program by providing a long term relationship with the fifth graders on Tuesday mornings. They concentrate on physical fitness, general health, and awareness. They reward students for excellent behavior and work throughout the year in PE by sponsoring a physical fitness run on the navy base. We have many other partners as well, including Coldstone Creamery, Handel's Ice Cream and Yogurt, Lago Mar Pizza, ATA Black Belt Academy, Chick-Fil-A, Pungo Pizza, Atlantic Garden Center, Courthouse Harris Teeter, Fazoli's, Uno's Pizzeria, Atlas Diner, Lendy's Café, Jungle Golf, Hunt Club Farms, Outback Steakhouse, and Rita's Ice.

Our school is very proud of our accomplishments last year in discipline. Through our introduction of Conscious Discipline in 2006-2007, including in-services and monthly book club meetings, we have decreased our referrals from 51 to 27. This is an overall decrease of 47%. We also implemented a new monthly "Best on the Bus" behavior incentive program and winners were treated to ice cream from Cold Stone Creamery.

Princess Anne continues to reach out to our community and communities in need. Last year we honored and remembered our heroes with a brunch presented to the VBSO and its deputies on September 11th. Our SCA provided necessary items such as t-shirts, socks, videos and magazines, and phone cards to the Veteran's in our area throughout the year. On Veteran's Day we welcomed veterans into each classroom to speak and they joined the students for lunch that day as well. The students at Princess Anne also participated in "Coats for Kids" in conjunction with Wavy-10, an SPCA pet food fund raiser, a book drive in which 3000 books were donated to our sister school, and they raised over \$9,500 for Jump Rope for Heart.

We continue to offer a large number of after school activities. Students can join the SCA, Safety Patrols, Chess Club, Science Club, Art Club, Chorus, Sunshine Express, and the School Newspaper as well as a variety of academic tutoring opportunities. These opportunities help our students gain a well rounded educational experience.

PLAN

VBCPS Plan for Continuous Improvement

Review and Analysis of Results

School: Princess Anne Elementary DATE: 10-31-2007

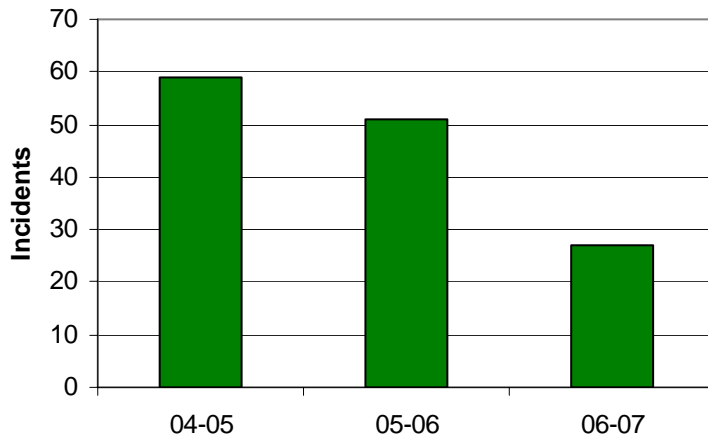
Review

(Objective data, qualitative indicators, trends and comparisons)

Analysis

(Identify gaps and list priorities)

Discipline



Discipline	04-05	05-06	06-07
	59	51	27

Goal: Decrease Discipline referrals by 5%.
 Target: To decrease from 51 referrals to 48 referrals
 Actual: 47.1% decrease from 51 referrals to 27 referrals

PLAN

VBCPS Plan for Continuous Improvement **Review and Analysis of Results** School: Princess Anne Elementary DATE: 10-31-2007

Review

(Objective data, qualitative indicators, trends and comparisons)

Analysis

(Identify gaps and list priorities)

Science 5th Grade SOL Data

Figure 2: Average Scale Scores

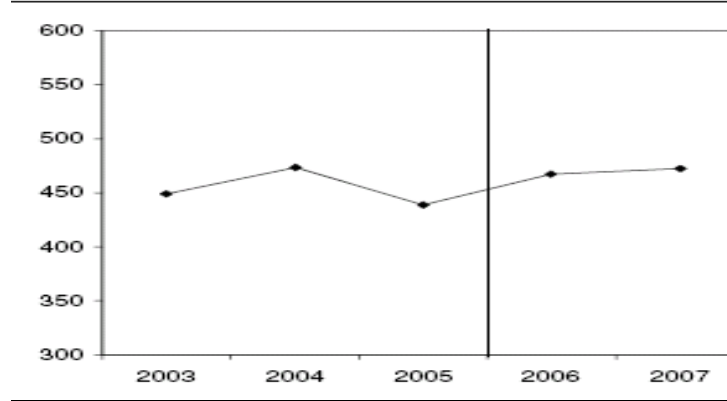


Figure 2: Average Scale Scores

	2003	2004	2005	2006	2007
Science	448.6	473.9	438.8	467.4	472.3

A gap exists between our pass advanced rates in all subject areas in comparison to 5th grade science. This will continue to be addressed in (goal #2).

PLAN

VBCPS Plan for Continuous Improvement

Review and Analysis of Results

School: Princess Anne Elementary

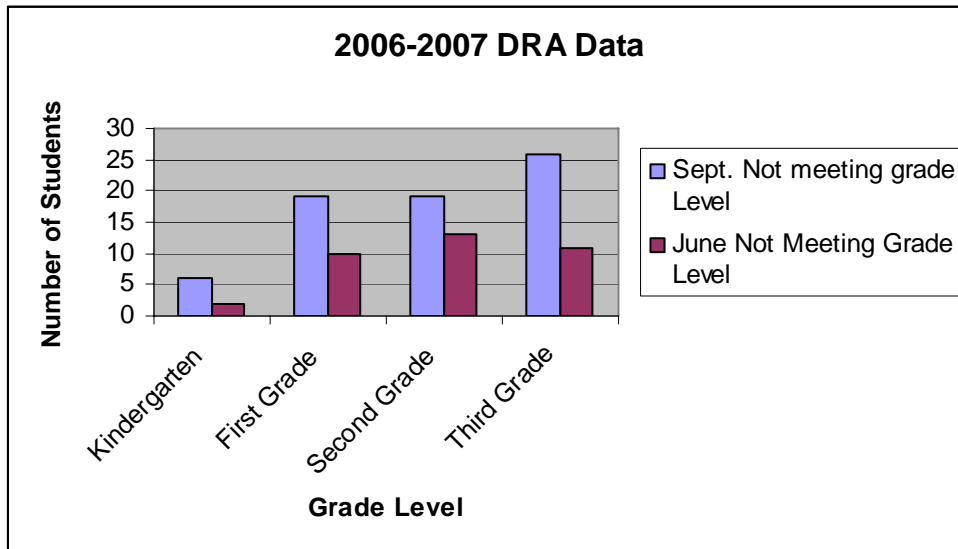
DATE: 10-31-2007

Review

(Objective data, qualitative indicators, trends and comparisons)

Analysis

(Identify gaps and list priorities)



49% who were not meeting grade level expectations in September were on grade level or above in June. The goal was not met. In 2007-2008 we will not include Kindergarten in the goal as the EDK program addresses the needs of those students. We will continue to identify and remediate students in 1st-3rd grade who are reading below grade level.

PLAN

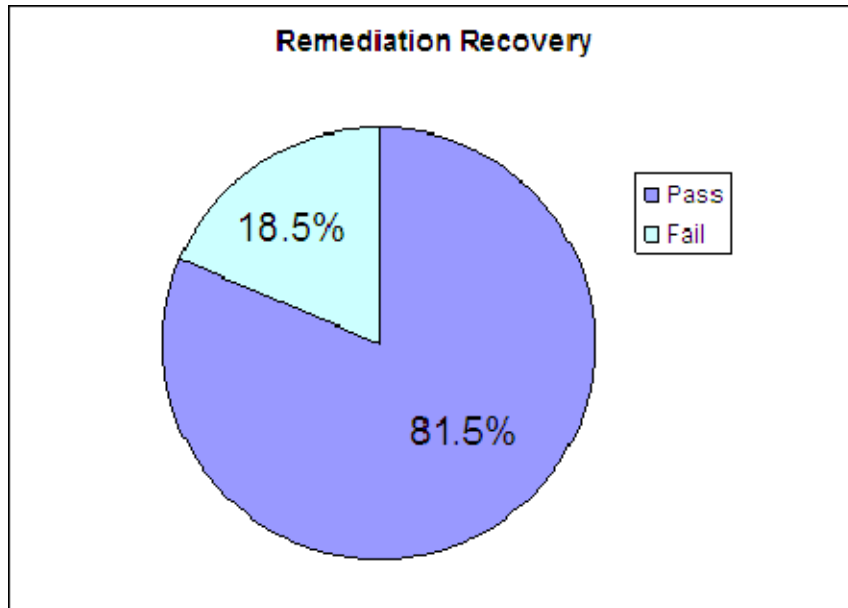
VBCPS Plan for Continuous Improvement **Review and Analysis of Results** School: Princess Anne Elementary DATE: 10-31-2007

Review

(Objective data, qualitative indicators, trends and comparisons)

Analysis

(Identify gaps and list priorities)



Total Pass	22
Total Remediation	27

Goal: To increase the overall pass rate of remediation recovery language arts scores of 4th and 5th graders to 70%. We have successfully met and exceeded the expectations of this goal.

PLAN

VBCPS Plan for Continuous Improvement

Measurable Objectives

School: Princess Anne Elementary

DATE: 10-31-2007

Measurable Objectives	Areas of Focus	Performance Measures	Assigned Point Person or Action Team
<p>To increase pass rates on third grade Reading SOL by 7%.</p>	<p>Target students: Grade 1- Oct./Nov.- Instructional DRA level at or below 6 Jan./Feb.- Instructional DRA level at or below 10 Grade 2- Oct./Nov.- Instructional DRA level at or below 16 and/or L.A. diagnostic test score at or below 50% Jan./Feb.- Instructional DRA level at or below 20 and/or students identified in Oct. who have not made significant progress on quarterly testing Grade 3- Oct./Nov.- Instructional DRA level at or below 28 and/or L.A. diagnostic test score at or below 50% Jan./Feb.- Instructional DRA level at or below 34 and/or students identified in Oct. who have not made significant progress on quarterly testing.</p>	<p>DRA Quarterly Tests Report Cards EDK Pre-tests PAL's pre and posttests Mid-year /posttests</p>	<p style="text-align: center;">Courtney Boyce Lisa Austin</p>

DEPARTMENT OF SCHOOL ADMINISTRATION

PCI
FORM 4 – 1
 Due annually October 31st



PLAN

<p>Increase the 5th grade mean science score to 477.</p>	<p>Increase understanding of Earth and Space Systems and Cycles. Increase the opportunity for students to plan and carry out scientific investigations.</p>	<p>SOL scores Track usage through the Science Lab calendar</p>	<p>Claire Kroft</p>
<p>Decrease Discipline Referrals by 3%.</p>	<p>Identify and monitor student behavior and provide intervention as needed.</p>	<p>SASI data</p>	<p>Michael Taylor</p>